

Parts Life Cycle Management

There are a myriad of challenges facing operators when it comes to life cycle management. Keeping track what parts are in operation, in stock and their useful life or condition are among the most challenging. The bulk of maintenance costs are in the scheduled maintenance, however, estimating what those costs will be has considerable risk without a database of the previous service and operating history that includes failed starts, emergency stops, misfires or flashbacks, exhaust spread variations, etc. – all of which need to be evaluated with Equivalent Operating Hours (EOH) or Factored Fired Hours (FFH).



Core Modules

- Usage calculator
- Turbine inspections
- Capital parts data
- TIL and TIL activity
- Outage timelines
- Future modelling (“what if” scenarios)
- Cost estimator for future inspections
- Parts life cycle costs
- Actual inspection costs
- CSV download to Excel
- Single item tracking (individual buckets)
- Connection to external systems like OSISoft PI system through PI Cloud for automated import of fired hours/starts

TTS Lodestar

Introducing Lodestar - Software that guides turbine operators on everything involved in parts life cycle management. Lodestar is the only non-OEM parts life cycle management software in the market; there is nothing else like it.

Lodestar is a technical solution that can gather unprecedented amounts of data about parts and components of your gas turbine. By weaving systems, data and people together, we create solutions that increase performance across many levels.

Benefits

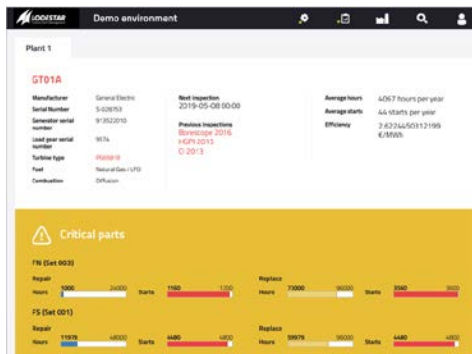
- Projected 16% cost savings from digital systems and processes.
- More fluid workforce... Lodestar is licensed by the unit and not by the “seat”.
- Improved levels of innovation
- Engaged in an ecosystem with technology partners.
- Predictable disruptions minimizing downtime.

Lodestar Tracking

- Projected 16% cost savings from digital systems and processes.
- More fluid workforce... Lodestar is licensed by the unit and not by the “seat”.
- Improved levels of innovation
- Engaged in an ecosystem with technology partners.
- Predictable disruptions minimizing downtime.

Lodestar Reporting

- Graphical representation of maintenance timeline
- Identification of components driving outage schedules
- Interactive future planning model
- Cost and value reports + budget planning
- Easy data entry by client



CORE MODULE DASHBOARDS

- Warnings as parts approach end of life
- List of previous inspections and expected dates for upcoming inspections
- Average annual operational data

PARTS LIFE CYCLE MANAGEMENT SOFTWARE